



A WYSIWYG tool to create scriptUI interfaces

A graphical tool to create scriptUI interfaces.

What you see is what you get.





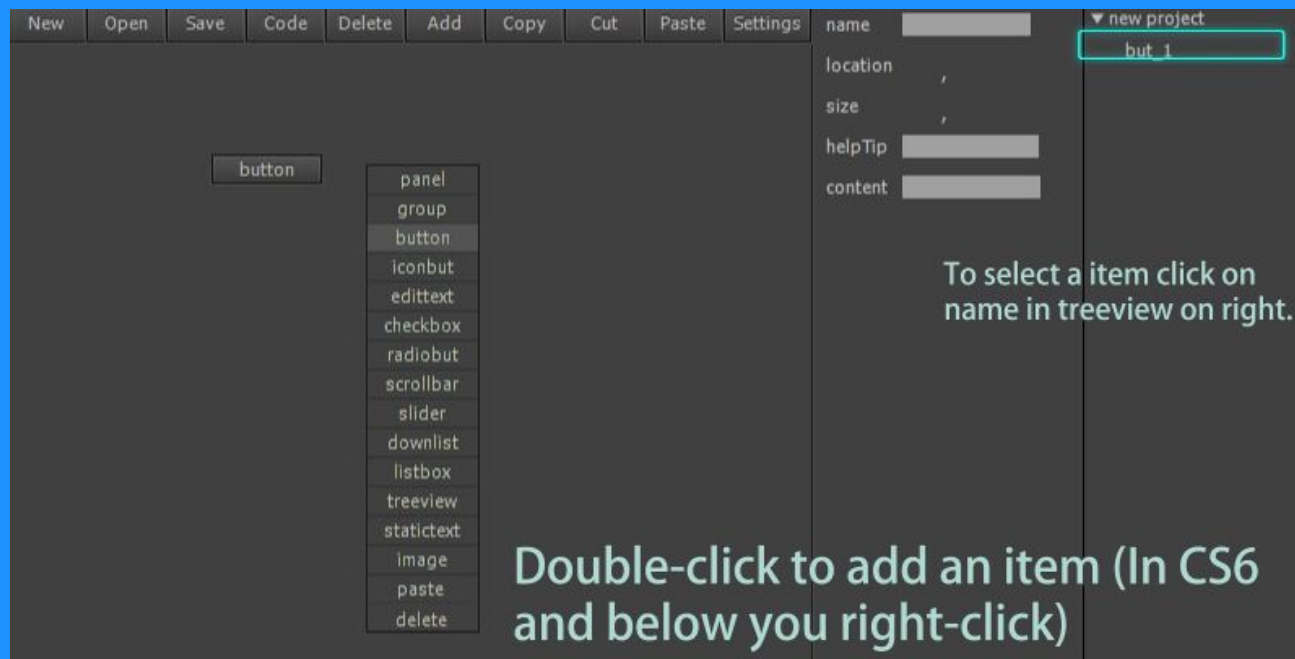
- In AE cc, You can set your button and modifier prefs on left of this menu.
- In cs4-cs6, there is only one method of operation

This is the initial mode of operation:

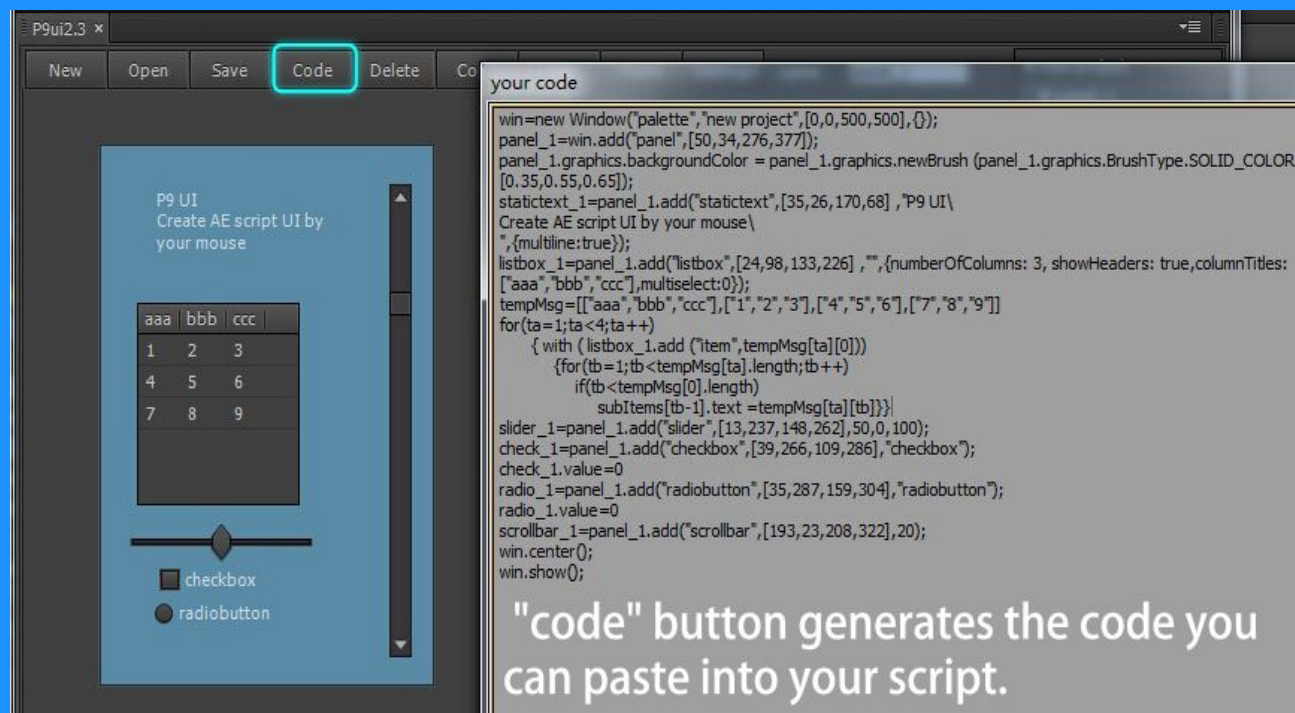
**ctrl + Left** mouse button to change location

**shift + Left** mouse button to change size

**alt + Left** mouse button to copy



- Double-click to add an item (In Cs6 and below you right-click)
- Drag to change location.
- The arrow keys also can adjust location by 1 pixel or 5 pixels if you hold Shift.
- Change size using modifier
- Copy the items using modifier and dragging



"code" button generates the code you can paste into your script.

You can copy it into the your .jsx

## SUPPORT/QUESTIONS/COMMENTS

Visit <http://aescrpts.com.com/support> , or contact [liep9@qq.com](mailto:liep9@qq.com)